

Investor Information

(As of March 31, 2006)

Common Stock

Authorized: 1,426,942,000 shares
 Issued: 884,068,713 shares

Stock Exchange Listings

Tokyo Stock Exchange
 Osaka Securities Exchange
 Nagoya Stock Exchange

Number of Shareholders

61,178

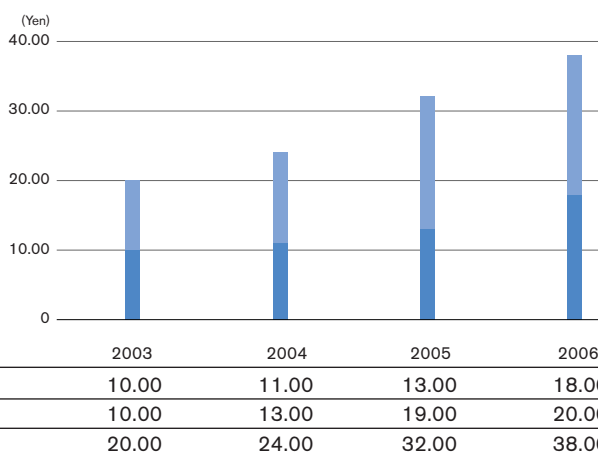
Independent Auditors

Deloitte Touche Tohmatsu (a Japanese member firm of
 Deloitte Touche Tohmatsu, a Swiss Verein)

Administrator of Shareholders' Register

Mitsubishi UFJ Trust and Banking Corporation
 1-4-5, Marunouchi, Chiyoda-ku,
 Tokyo 100-8212, Japan

Dividends Paid

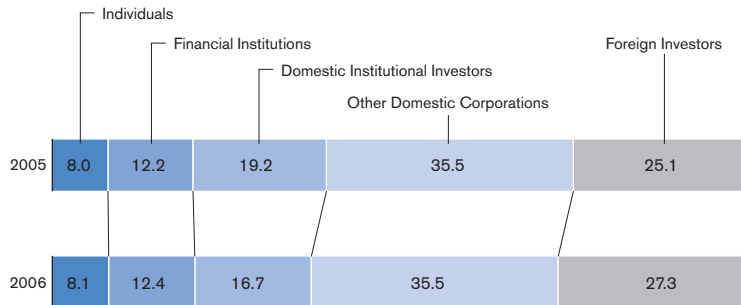


Principal Shareholders (Leading Ten Principal Shareholders)

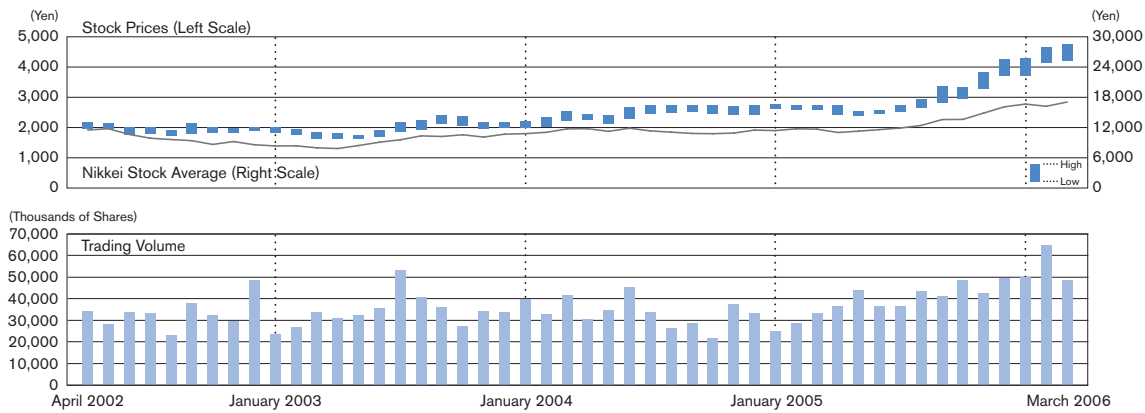
	Number of shares held (thousands)	Voting share ratio (%)
Toyota Motor Corporation	203,127	24.59
Toyota Industries Corporation	69,373	8.40
The Master Trust Bank of Japan, Ltd. (Trust Account)	53,036	6.42
Robert Bosch Industries AG	47,434	5.74
Japan Trustee Services Bank, Ltd. (Trust Account)	39,205	4.74
Nippon Life Insurance Company	23,050	2.79
Mitsui Sumitomo Insurance Company, Limited	16,148	1.95
DENSO Employees' Shareholding Association	11,711	1.41
State Street Bank & Trust Company	20,854	1.31
Meiji Yasuda Life Insurance Company	9,373	1.13

Note: The above table excludes 57,773 thousand shares of treasury stock held by DENSO Corporation.

Breakdown of Shareholders (Voting Share Ratio, %)



DENSO's Common Stock Price Range and Trading Volume on Tokyo Stock Exchange (Adjusted to Reflect Free Share Distributions and Stock Splits)



Headquarters

DENSO CORPORATION
1-1, Showa-cho, Kariya,
Aichi 448-8661, Japan
Telephone: +81-566-25-5511

Date of Establishment

December 16, 1949

Publications

Financial Statements
Fact Book 'DENSO in Figures'
Corporate Brochure
CSR Report

Investor Relations

If you have any questions or would like a copy of our publications, please contact:
Financial Planning Center
Corporate Planning Department
DENSO CORPORATION
1-1, Showa-cho, Kariya,
Aichi 448-8661, Japan
Telephone: +81-566-25-5849
Facsimile: +81-566-25-4860