

Investor Information

(As of March 31, 2007)

Common Stock

Authorized: 1,500,000,000 shares
Issued: 884,068,713 shares

Stock Exchange Listings

Tokyo Stock Exchange
Osaka Securities Exchange
Nagoya Stock Exchange

Number of Shareholders

68,755

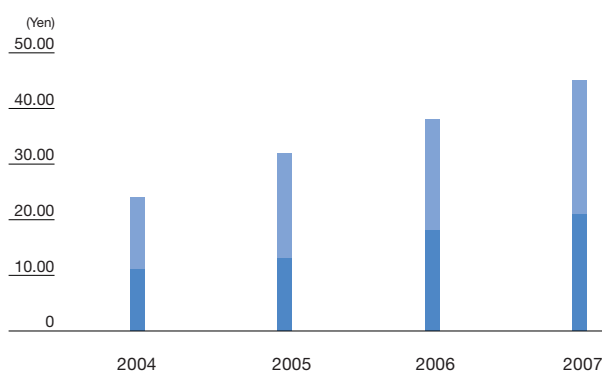
Independent Auditors

Deloitte Touche Tohmatsu (a Japanese member firm of
Deloitte Touche Tohmatsu, a Swiss Verein)

Administrator of Shareholders' Register

Mitsubishi UFJ Trust and Banking Corporation
1-4-5, Marunouchi, Chiyoda-ku,
Tokyo 100-8212, Japan

Dividends Paid



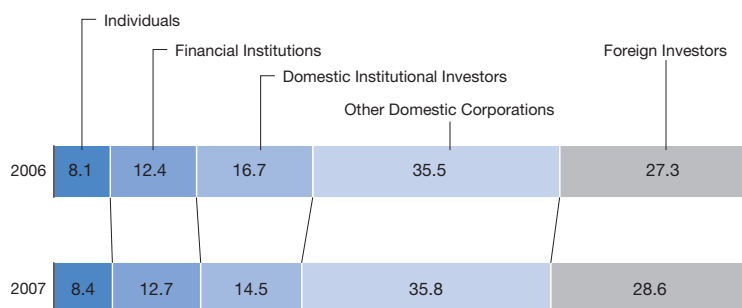
	2004	2005	2006	2007
■ Interim dividends per share (yen)	11.00	13.00	18.00	21.00
■ Year-end dividends per share (yen)	13.00	19.00	20.00	24.00
Total (yen)	24.00	32.00	38.00	45.00

Principal Shareholders (Leading Ten Principal Shareholders)

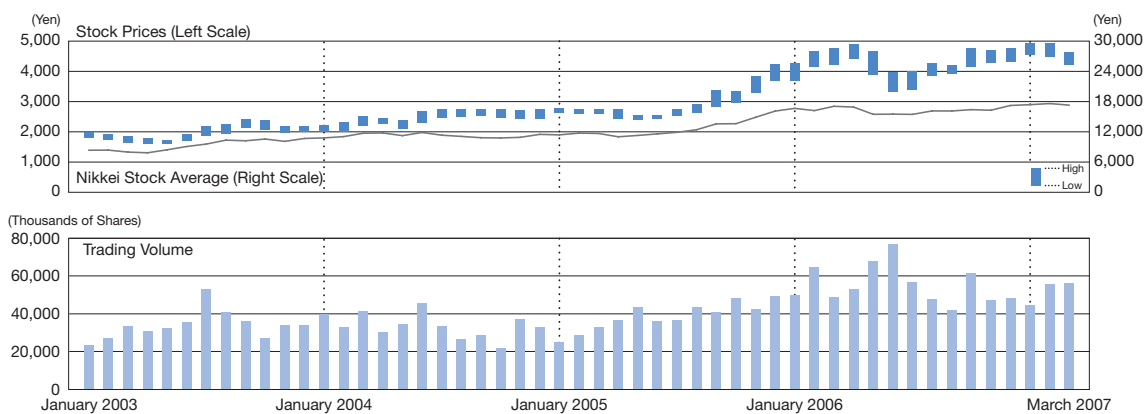
	Number of shares held (thousands)	Voting share ratio (%)
Toyota Motor Corporation	201,502	24.75
Toyota Industries Corporation	69,373	8.52
Robert Bosch Industries AG	47,434	5.82
The Master Trust Bank of Japan, Ltd. (Trust Account)	42,159	5.17
Japan Trustee Services Bank, Ltd. (Trust Account)	35,588	4.37
Nippon Life Insurance Company	23,050	2.83
Mitsui Sumitomo Insurance Company, Limited	15,148	1.86
DENSO Employees' Shareholding Association	11,643	1.43
State Street Bank & Trust Company	9,905	1.21
Meiji Yasuda Life Insurance Company	9,373	1.15

Note: The above table excludes 69,551 thousand shares of treasury stock held by DENSO Corporation.

Breakdown of Shareholders (Voting Share Ratio, %)



DENSO's Common Stock Price Range and Trading Volume on Tokyo Stock Exchange (Adjusted to Reflect Free Share Distributions and Stock Splits)



Headquarters

DENSO CORPORATION
1-1, Showa-cho, Kariya,
Aichi 448-8661, Japan
Telephone: +81-566-25-5511

Date of Establishment

December 16, 1949

Publications

Financial Statements
Fact Book 'DENSO in Figures'
Corporate Brochure
CSR Report

Investor Relations

If you have any questions or would like a copy of our publications, please contact:

IR Group
Finance & Accounting Department
DENSO CORPORATION
1-1, Showa-cho, Kariya,
Aichi 448-8661, Japan
Telephone: +81-566-25-5850
Facsimile: +81-566-25-4860