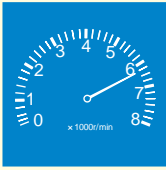


IRIDIUM RACING is recommended for the following user.



Improve acceleration and engine power with **IRIDIUM RACING**

Reliability and durability, backed by the racing results of major drivers such as Sorberg, Stoner & Koyama

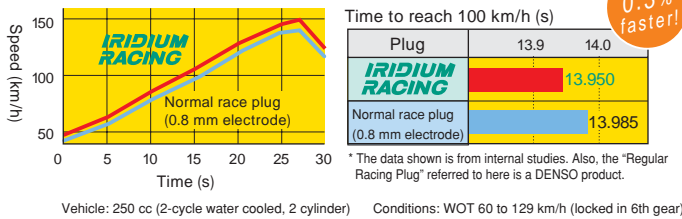
It's the age of iridium electrodes. Discover more acceleration with 0.4 mm DENSO Racing Plugs. DENSO would like you to try the 0.4 mm **IRIDIUM RACING** advantage. Use **IRIDIUM RACING** and experience a ride like never before.

Improved Acceleration



Unbeatable acceleration performance on the circuit.

With an ultra-fine, 0.4 mm diameter center electrode, **IRIDIUM RACING** plugs are the realization of superb ignition performance and required voltage at unparalleled levels. Misfires have been controlled and will allow you to have steadily high levels of response and increased acceleration.

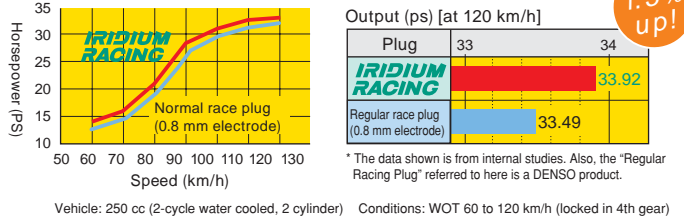


Improved Horse Power



More power with an ideal combustion cycle.

Through superb ignitability and required voltage, non-firing and misfires under a variety of conditions has been greatly reduced. As a result, combustion conditions have improved dramatically, increasing engine output.

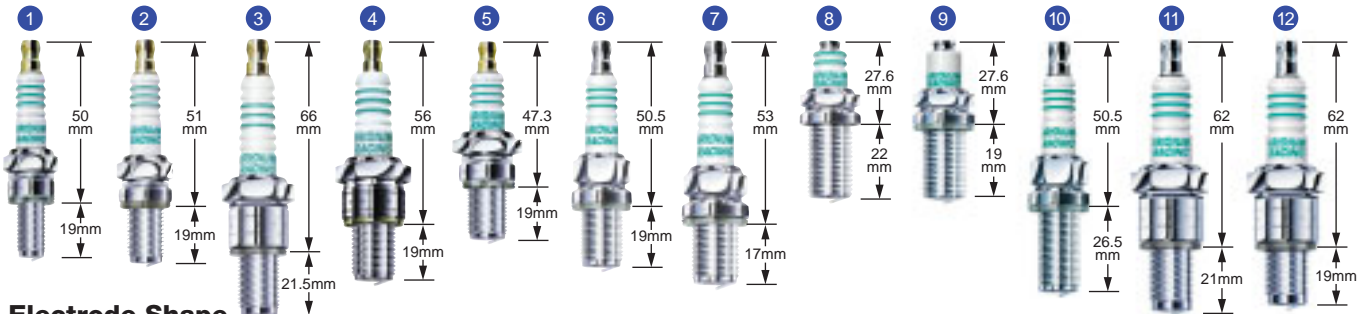


How to Choose a Racing Plug

Warning: On choosing the right racing plug

- Generally, electrodes that project into the combustion chamber have better ignitability and have better performance. However, because of more exposure to high temperature combustion gases and because ground electrode becomes longer, heat resistance and durability decrease. The higher the level of tuning, the greater the need is to use a less projecting type.
- As the level of tuning is increased, so does the need for higher heat range.

Overall Shape



Electrode Shape



Identifying IRIDIUM RACING (Stamped into the Center of the Housing)

I	W	0	1	-	27
Variety	Thread Size	Intermediate Number (Overall Size)	Intermediate Number (Electrode Shape)		Heat Range
I : Iridium	U: 10 mm XU: 12 mm A: 14 mm AE: 14 mm K: 14 mm KH: 14 mm Q: 14 mm RE: 14 mm RL: 14 mm RT: 14 mm W: 14 mm WM: 14 mm		1 : Slant ground electrode or surface gap plug. 2 : Flat ground electrode		24 27 29 31 32 34 35
R : Surface Gap			6 : Slant ground electrode and non-resistor plug		

(Exception) IRE01 has a flat ground electrode.

DENSO	TYPE	Figure Electrode	Cross Reference
IU01-	U-E	1 A	R0373A, R0379A, R016
RU01-	U-E (SURFACE)	1 C	R0045J, R0045Q
IXU01-	XU-E	2 A	R216, R2525
IRE01-	ROTARY ENGINE	3 B	R6725
IW01-	W-E	4 A	R6385P, R7379, R6918B
IW06-	W-E (NON=RESISTOR)	4 A	B-EGP, R4630A
IWM01-	W-EM	5 A	R5184, R6179AP
IK01-	ISO (SLANT ELECT)	6 A	R7116, R7117
IK02-	ISO (STRAIGHT ELECT)	6 B	R7279, R7118, R7119
IQ01-	SLANT ELECT	7 A	R7236, R7237
IQ02-	STRAIGHT ELECT	7 B	R7238, R7239
IA01-	FOR DETONATION COUNTER	8 A	R7282A, R6120A
IAE01-	FOR W/OUT DETONATION COUNTER	9 A	R7282, R6120
IKH01-	K-LONGREACH	10 A	R7438
IRL01-	ROTARY ENGINE RX8	11 A	R7440A-L
IRT01-	ROTARY ENGINE RX8	12 A	R7440B-L

RU01- are surface gap plugs, not ones with iridium center electrode and all-platinum ground electrodes. : indicate's the heat range.

IRIDIUM RACING is ideal for racing and tuned-up engines; please choose one based on the heat range of the standard plug or **IRIDIUM POWER** plugs used currently that is suited to your level of tuning.